



SCHOOL OF PUBLIC POLICY

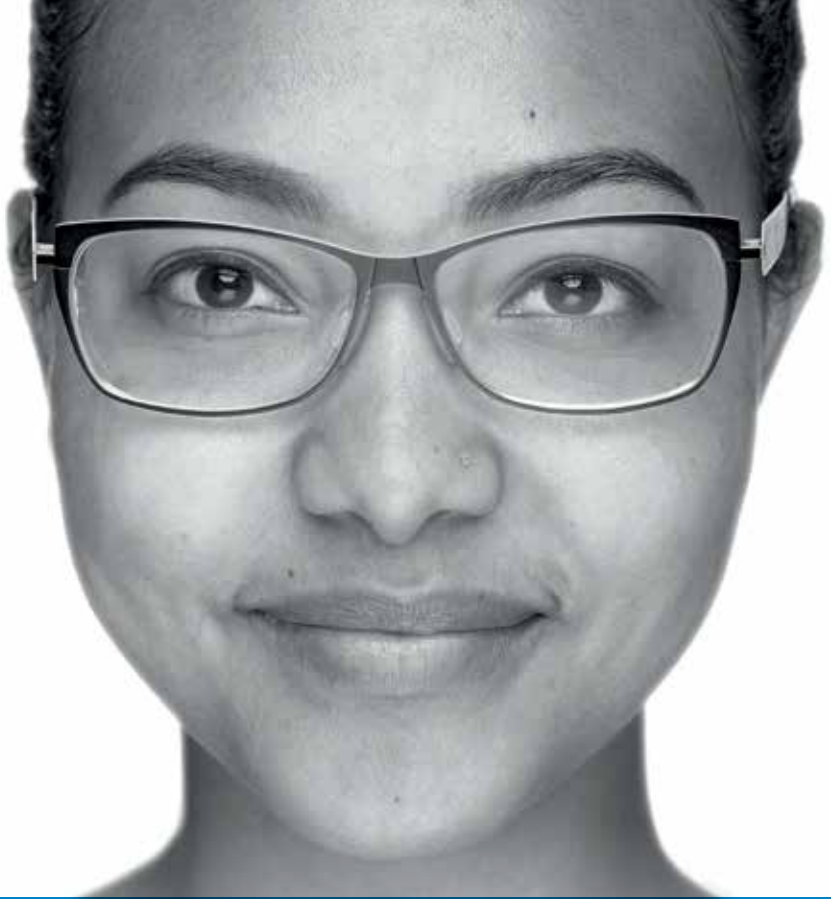


THE SCHOOL OF PUBLIC POLICY

The School of Public Policy is a global institution with students from almost 60 countries. It offers academic programs that support students to develop the skills they will need to identify, define, and address compelling and emerging public policy problems. Our faculty include top researchers and practitioners with extensive experience in the not-for-profit, public, and private sectors. Their expertise enriches the classes they teach on a wide range of public policy topics including development, human rights, media, and governance.

QUICK FACT / SPP is home to two policy centers: the Center for Media, Data and Society, and the Shattuck Center on Conflict, Negotiation and Recovery that provide students with valuable opportunities to engage with practitioners and participate in projects; and to the Global Policy Academy that organizes certificate courses that are open primarily to policymakers.

CAREER PATH / SPP equips students with policy knowledge, analytical frameworks, qualitative and quantitative skills, and practical experiences to make a positive difference in the world. Our alumni work for intergovernmental organizations, private sector firms, and leading non-profit and advocacy organizations, as well as national agencies and governments.



**MAHITAB
MAHGOUB**

SUDAN

"The School of Public Policy offers the opportunity to gain in-depth knowledge in a variety of policy areas. Professors complement teaching with a wide range of methods including documentary screenings, student debates, and simulation exercises, which enhance learning, keep us engaged, and stimulate critical thinking. They constantly encourage us to think critically about existing policies and status quos. The remarkable diversity of the CEU community contributes massively to the overall learning experience. The everyday exchange of knowledge, inside and outside classrooms, brings new perspectives to global social issues. I am continually inspired by the people I find myself sitting next to and who teach me in this program. So far, this experience has been challenging, exhilarating, and intellectually stimulating."

Master of Public Administration (MPA) TWO YEARS / A program combining academic training with an emphasis on work-based and applied skills of policy management, leadership, and advocacy, which includes a year-long Applied Policy Project.

Master of Arts in Public Policy (MAPP) ONE YEAR / A program that emphasizes the link between policy practice and analysis, including a focus on research skills and exposure to real world policy challenges.

Mundus Master's Program in Public Policy (Mundus MAPP) TWO YEARS / An international public policy program that includes a second year at the Institut Barcelona d'Estudis Internacionals (Spain) or the University of York (UK).

Doctor of Philosophy in Political Science – Public Policy Track / A doctoral program that prepares students for careers in research and university-level teaching, with a focus on developing professional-level research and analysis of European and international public policy as well as comparative policy analysis.

MPA and MAPP Tracks

Development, Governance,
Higher Education Policy,
Media and Communication, Security

Mundus MAPP Specializations

Global Public Policy,
European Public Policy

APPLICATION DEADLINES (FOR MPA AND MAPP) / **Scholarships**: February 1, 2017 / **Self-financing**: June 1, 2017

For Mundus MAPP-specific deadlines, visit www.mundusmapp.org.

SCHOLARSHIPS / CEU is committed to attracting talented students and scholars from around the world and provides generous merit-based scholarships available to students from any country. CEU students may receive financial aid, ranging from tuition awards to full scholarships with stipends and housing. Learn more about available funding options at:

www.spp.ceu.edu/financial-aid.

General Admissions Requirements

- Complete online application:
www.ceu.edu/apply
- Proof of English proficiency
- Letters of recommendation
- Curriculum vitae

Program Entry Requirements FOR THE MASTER'S PROGRAMS

Master of Public Administration

- General CEU admissions

requirements

- Bachelor's degree or its equivalent
- Statement of purpose
- Short essays
- Phone interview by invitation

Master of Arts in Public Policy

- General CEU admissions requirements
- Bachelor's degree
- Statement of purpose

Mundus MAPP

- Bachelor's degree
- Statement of purpose

- Specific requirements:
www.mundusmapp.org

Program Entry Requirements FOR THE DOCTORAL PROGRAM

- General CEU admissions requirements
- Master's degree
- Statement of purpose
- Research proposal
- Outline of master's thesis
- Specific requirements:
pds.ceu.edu

Central European University

Nador u. 9, 1051 Budapest, Hungary
www.ceu.edu

WHY CEU?

52 English-language degree programs.
Students and faculty from some **100**
countries. Alumni on **6** continents in top
positions. Accredited in the **U.S.** and
Hungary. **8:1** student/faculty ratio.
Based in **Budapest**, the heart of Europe.

40th
IN THE
WORLD

*QS World University
Rankings 2016*
**In Politics and
International
Studies**



.....
www.spp.ceu.edu

MPA, MA PROGRAMS: sppadmissions@ceu.edu

MUNDUS MAPP: mundusmapp@ceu.edu

PHD PROGRAM: ds@ceu.edu
.....

© Central European University, 2016

